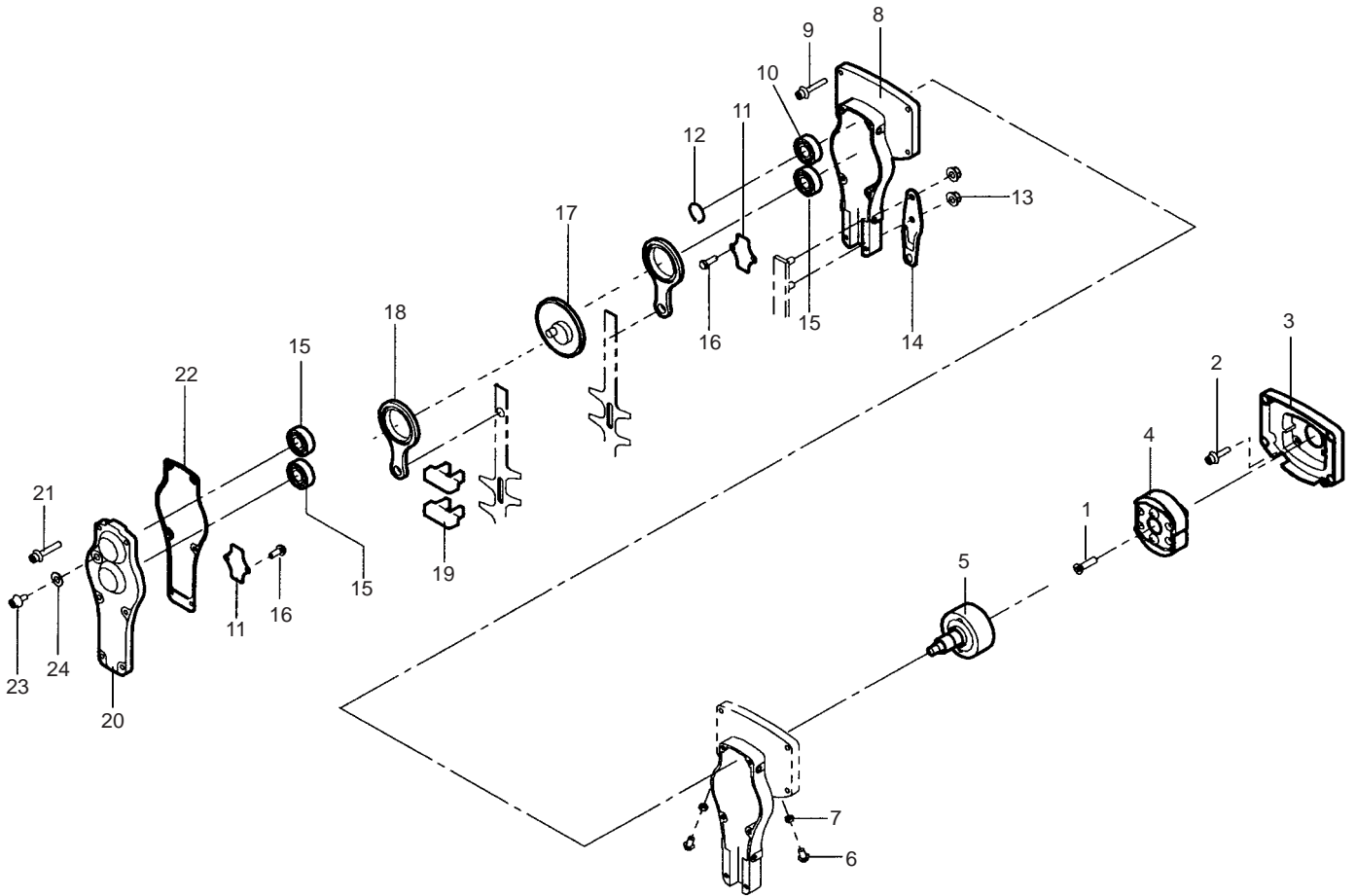


TM3100

GEAR CASE



PARTS LIST

REF. No.	PARTS No.		PARTS NAME	QTY			REMARKS
					NCLUDNG		
1	375L	0620	(+)FLAT SCREW	1			M6 x 20
2	423U	0515	SOCKET SCREW FLANGE	4			M5 x 15
3	51070	129	ENGINE BASE	1			
4	71019	118	CLUTCH SHOE ASS'Y	1			
5	11014	216	CLUTCH DRUM C.P.	1			
6	335L	0508	BOLT FLANGE	2			M5 x 8
7	513L	0500	HEXAGON NUT	2			M5
8	51068	106	CAM CASE	1			
9	423U	0518	SOCKET SCREW FLANGE	4			M5 x 18
10	954B	6003	BEARING	1			6003 ZZ C3
11	11050	168	FIXING PLATE	2			
12	812V	1700	C-SNAPRING FOR SHAFT	1			17
13	571L	0600	HEXAGON NUT FLANGE	2			M6
14	11102	208	HOLDER	1			
15	954B	0629	BEARING	3			629 ZZ C3
16	31062	152	LOCK COAT (+) SCREW	4			M4 x 8
17	78004	256	GEAR	1			
18	11046	104	CAM ROD C.P.	2			
19	61010	111	FELT PACKING	2			
20	51069	104	CAM CASE COVER	1			
21	423U	0515	SOCKET SCREW FLANGE	6			M5 x 15
22	61019	214	PACKING	1			
23	427U	0608	SOCKET SCREW BUTTON	1			M6 x 8
24	611L	0600	PLAIN WASHER	1			M6